

MONTHLY MEMBERSHIP PROGRESS REPORT

LOCATION INDIA

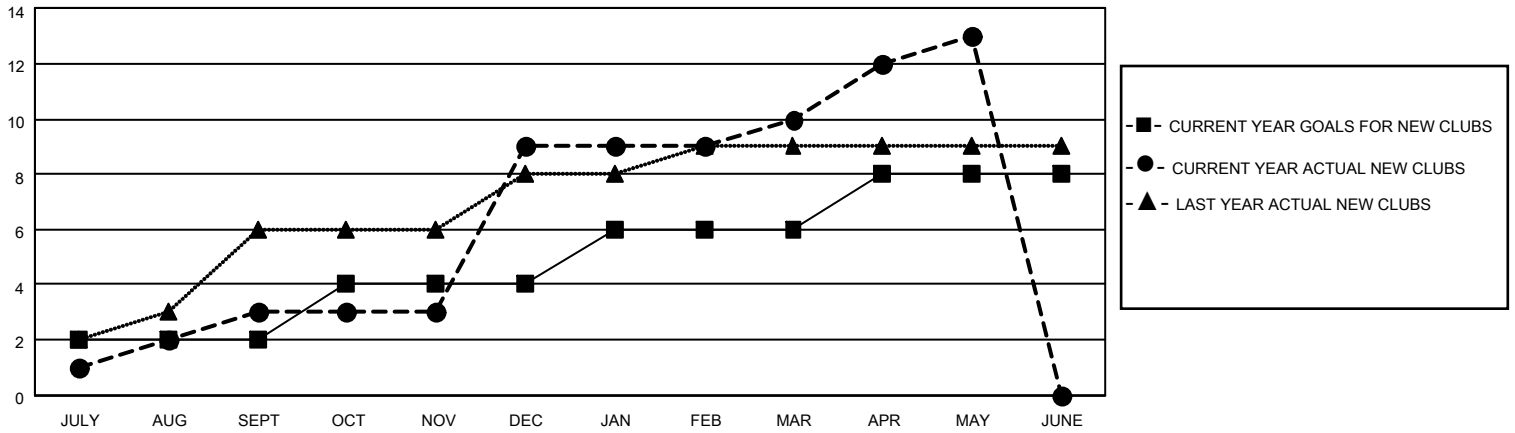
District 318 A

Results as of: 5/31/2021

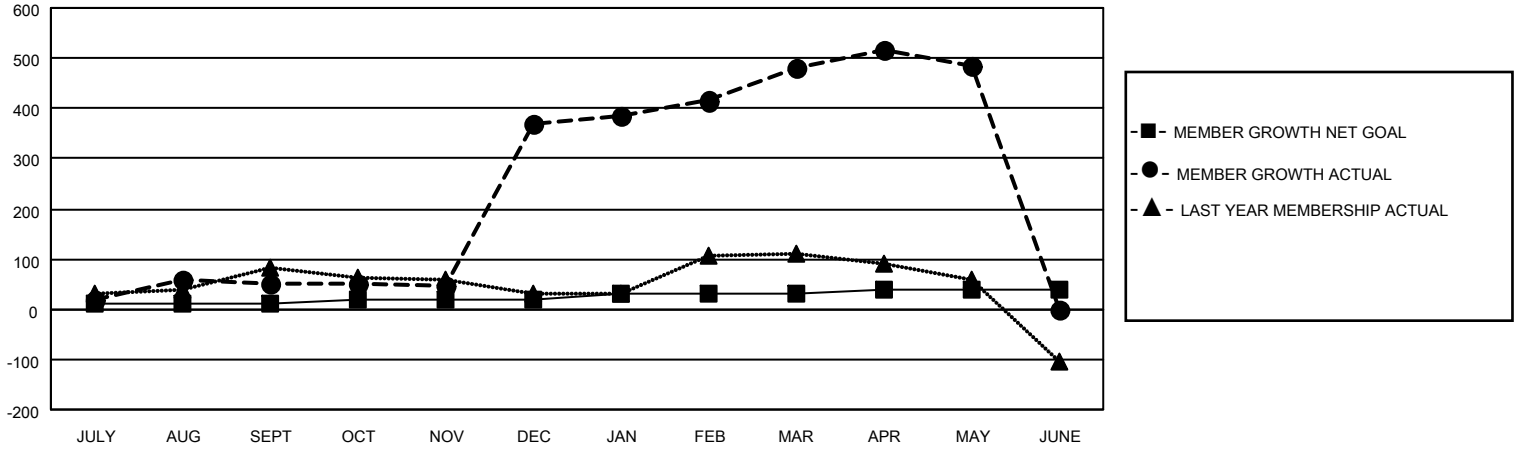
Clubs			
RESULTS FOR 2020-2021			
QUARTER	NEW CLUB GOAL	NEW CLUBS	DROPPED CLUBS
JULY/AUG/SEPT	2	3	2
OCT/NOV/DEC	2	6	0
JAN/FEB/MAR	2	1	6
APR/MAY/JUNE	2	3	0

Members			
RESULTS FOR 2020-2021			
QUARTER	MEMBER GROWTH NET GOAL	MEMBER GROWTH ACTUAL	DROPPED MEMBERS ACTUAL (including transfers)
JULY/AUG/SEPT	10	217	158
OCT/NOV/DEC	10	474	149
JAN/FEB/MAR	10	260	113
APR/MAY/JUNE	10	95	83

GOALS AND ACTUAL NEW CLUBS CUMULATIVE



GOALS AND ACTUAL MEMBERS CUMULATIVE



DROPPED CLUBS: 8	104 CLUBS OF 142 ADDED 1 OR MORE NEW MEMBERS	<u>GENDER DISTRIBUTION</u>
<u>DROPPED MEMBERS</u>		MALE 3,236 (73.43%)
DECEASED 25		FEMALE 1,171 (26.57%)
CLUB CANCELLED 73		TOTAL FAMILY UNIT MEMBERS 2,201
OTHER 405		FAMILY MEMBERS PAYING HALF DUES 1,184
TOTAL 503	CLICK HERE FOR CUMULATIVE MEMBERSHIP DATA	